



# Supplemental Environmental Projects

---

May 2024

Alison Stidworthy



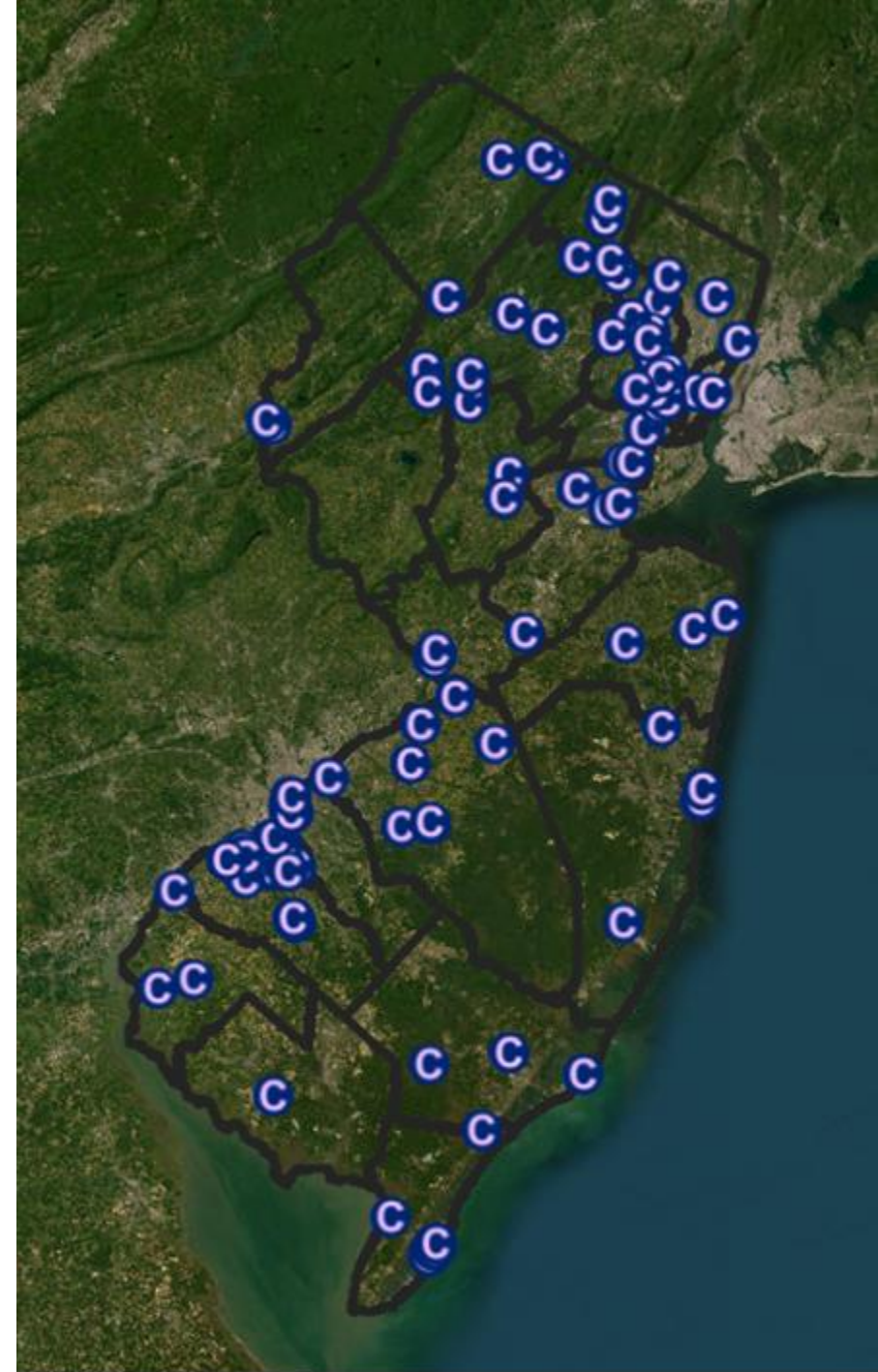


# Supplemental Environmental Projects (SEPs)

Purpose

Process

Product



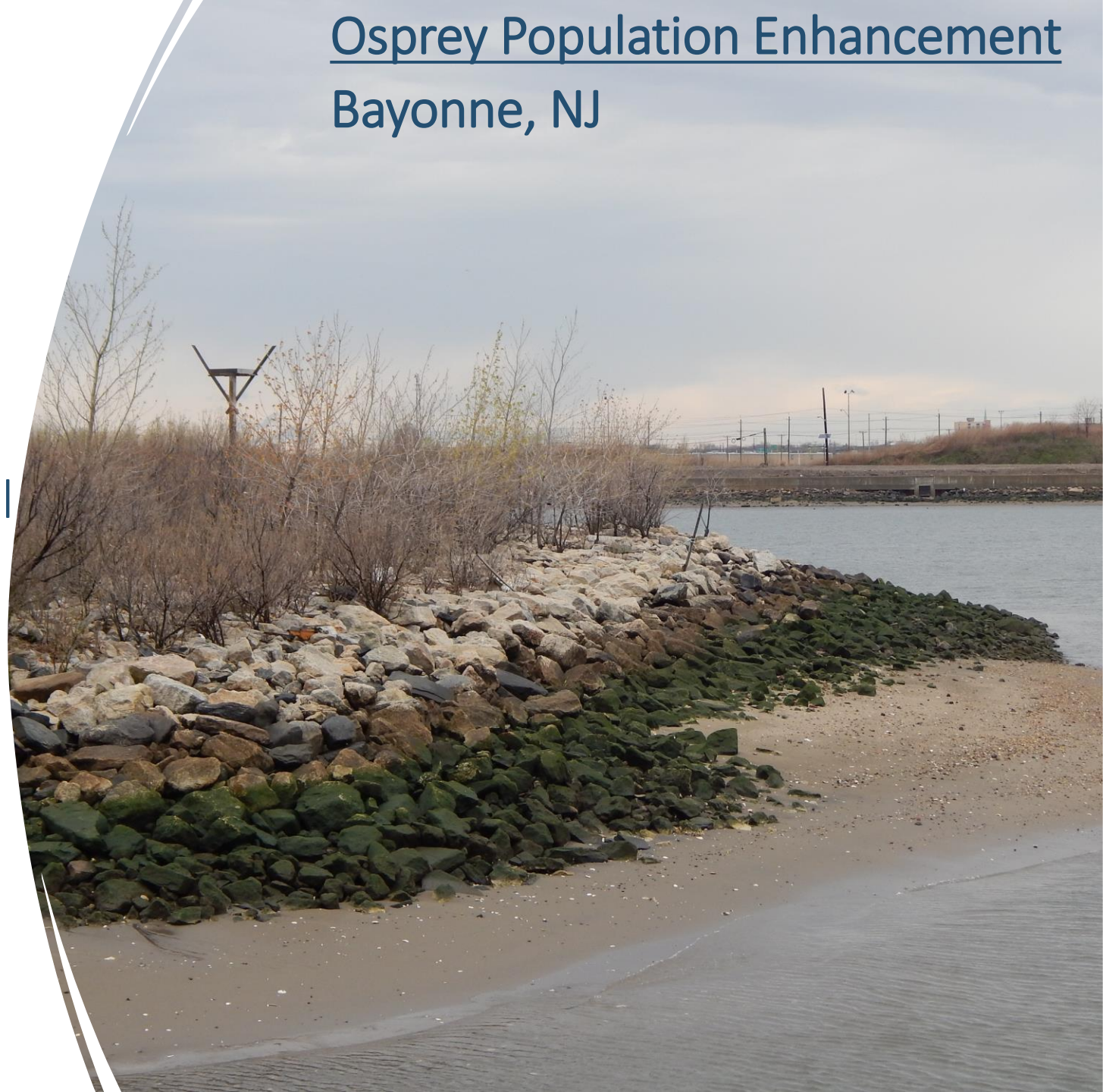
# Purpose

Benefits the Public: primary goal

Benefits the Facility

EJ & Climate Change

Intent





Forked River Turtle Nesting Habitat  
Forked River, NJ

# Process

Enforcement Action

Community Needs Assessment

SEP Proposal

Department Review & Oversight





# Product

---

Facility designs themselves

Community Needs Assessment

Environmental Mitigation Fund

Waterfront South Rain Gardens  
Camden, NJ







Travel throughout the city more easily by requesting a quick \$2 ride so you can get to work, doctors' appointments, groceries, and shopping more easily. Our Trenton-local drivers are familiar faces and ready to bring you where you need to go.

### On-Demand Shuttle

[Book On-Demand Shuttle NOW](#)



Our workforce van service is dedicated to making sure you have an easy way to get to and back from work.

### Workforce Van

[Coming SOON!](#)



Coming Soon!

### Public Charging Stations

[Coming SOON!](#)

# Environmental Mitigation Fund

[GO Trenton!](#)



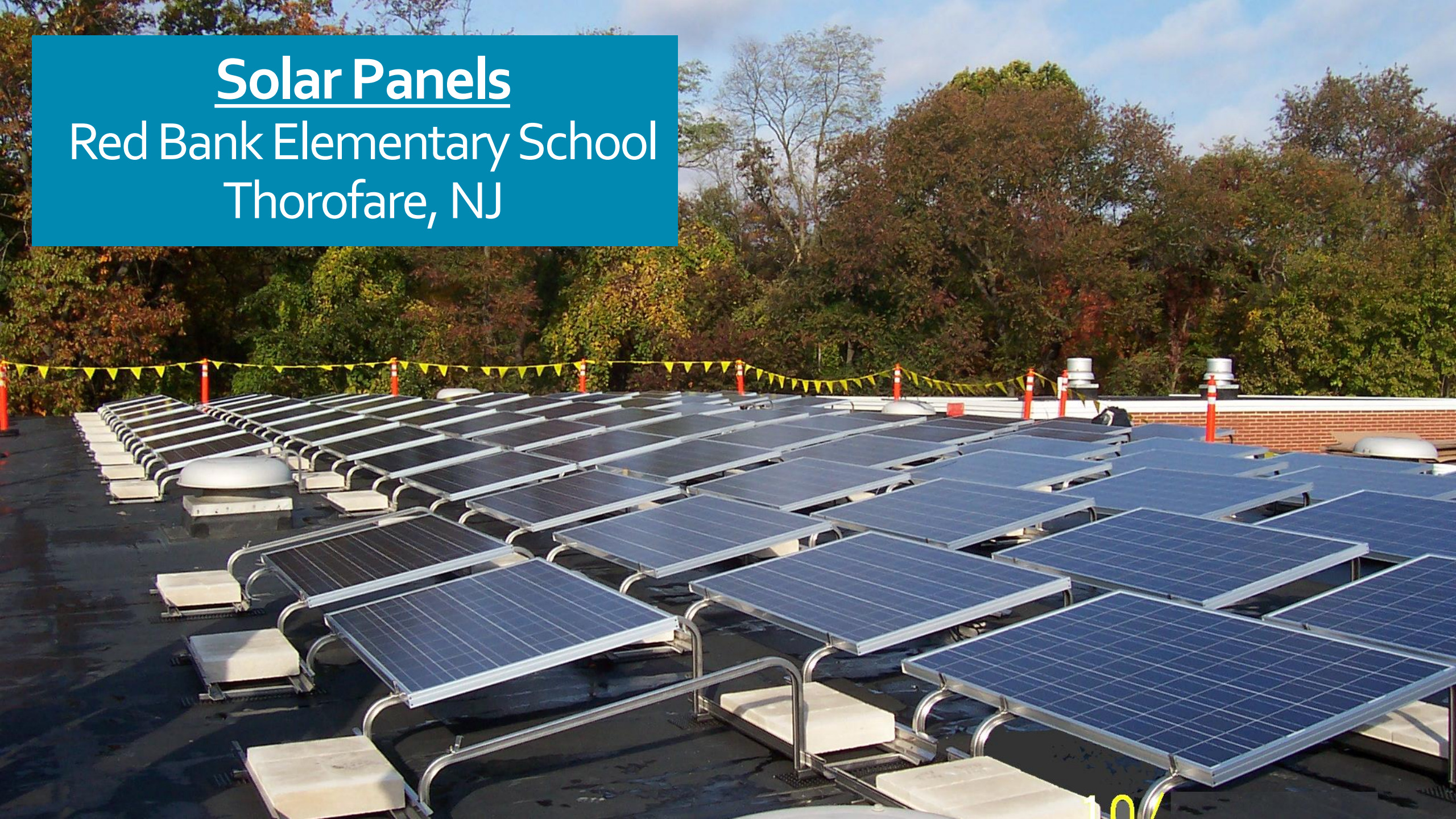
A photograph of an outdoor electric vehicle (EV) charging station in Seaside Heights, NJ. The station features several charging ports with charging cables. The ground is marked with green and yellow lines, and the word "EV" is painted on the pavement. In the background, there are buildings, including a two-story house with a balcony, and a parking lot with several cars. The sky is blue with some clouds.

EV Charging Stations  
Seaside Heights, NJ  
ChargePoint App



# Solar Panels

Red Bank Elementary School  
Thorofare, NJ





A photograph of Rutgers-Camden Community Park in Camden, NJ. The foreground features a colorful playground with purple, green, and yellow equipment on a dark mulch surface. A black metal fence surrounds the park area. In the middle ground, there is a grassy area with several wooden picnic tables and benches. A paved walkway leads through the park. In the background, a street with parked cars and brick buildings is visible under an overcast sky.

Rutgers-Camden  
Community Park  
Camden, NJ



# For more info

- General SEP Policy related inquiries may be referred to:
  - Joe Traum, Enforcement Coordinator, Office of Enforcement Policy
  - [Joe.Traum@dep.nj.gov](mailto:Joe.Traum@dep.nj.gov)





# Thank you!

## Alison Stidworthy

Environmental Specialist II

Division of Air Enforcement



alison.stidworthy@dep.nj.gov



[www.nj.gov/dep/enforcement/air.html](http://www.nj.gov/dep/enforcement/air.html)



Southern Regional Office  
856-614-3601

Like & follow us!



@newjerseydep



@nj.dep



# LINKS

- **SEP Website:** [nj.gov/dep/enforcement/seps.html](https://www.nj.gov/dep/enforcement/seps.html)
- **Compliance Advisory #2024-05:**
  - <https://www.nj.gov/dep/enforcement/advisories-date.html>
- **Environmental Stewardship:**  
<https://www.nj.gov/dep/enforcement/stewardship/faqs.html>
- **E-Mobility:** <https://dep.nj.gov/drivegreen/emobility/>
- **GO Trenton!** <https://www.gotrenton.org/>
- **ChargePoint App:** <https://www.chargepoint.com/drivers/mobile>
- **SEP Projects:**
  - [nj.gov/dep/enforcement/ospreys.html](https://www.nj.gov/dep/enforcement/ospreys.html)
  - [nj.gov/dep/enforcement/turtle-nesting.html](https://www.nj.gov/dep/enforcement/turtle-nesting.html)
  - [nj.gov/dep/enforcement/camdenraingarden.html](https://www.nj.gov/dep/enforcement/camdenraingarden.html)
  - [nj.gov/dep/enforcement/seaside.html](https://www.nj.gov/dep/enforcement/seaside.html)
  - [nj.gov/dep/enforcement/solarpanels.html](https://www.nj.gov/dep/enforcement/solarpanels.html)
  - [nj.gov/dep/enforcement/rutgers-camden.html](https://www.nj.gov/dep/enforcement/rutgers-camden.html)